

LAMP® HG-JHM20T DAMPER HINGE INSTALLATION INSTRUCTIONS (For wood use.)



Thank you for selecting our product. Before starting installation, please read this manual thoroughly to ensure correct installation. Please keep this manual at hand for future reference.

Meaning of symbols

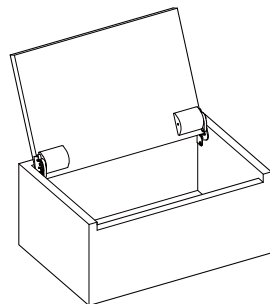


ABOUT THE PRODUCT

- ❗ Range of use :Lids of a size and weight less than the damper torque See the Specifications table.
- ❗ Be sure to install the left and right brackets correctly.

PRECAUTIONS

- ⊘ Do not use excessive force to the damper as this may result in damage.
- ⊘ This product is for indoor use only. Do not use outside or any where it will be exposed to water.
- ⚠ If the released angle is less than 60 degree, damper may not work properly.
- If the operating temperature increases, the door movement becomes quicker. If the temperature decreases, movement becomes slower. This is not a mechanical problem.

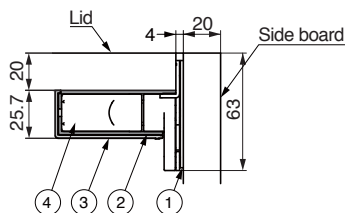


COMPONENT PARTS

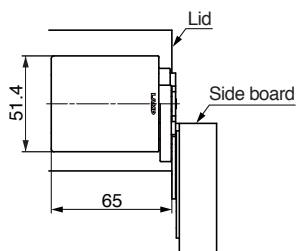
No.	Part Name	Qty	形状
①	Side bracket	* L/R 1 ea.	
②	Damper bracket	* L/R 1 ea.	
③	Cover	2	
④	Screw	12	・ Bind head tapping screw 3.5x14 4pcs 3.5x20 8pcs

正面図

(Lid, closed position)



(Lid, 90° open position)



SPECIFICATIONS

Item	Cover color	Damper torque N · m (Kgf · cm)
HG-JHM20T-80BL	Black	6-8 (61.2-81.6)
HG-JHM20T-80WT	White	
HG-JHM20T-80CR	Chrome	

* "L" means "to be installed at left side"

MAXIMUM LID TORQUE CALCULATION

$$T = m \times 9.80665 \times L / 1000$$

T: Maximum lid torque (N·m)

m: Lid weight (kg)

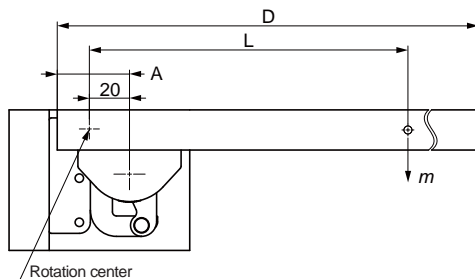
L: Distance from rotation centre to lid centre of gravity (mm)

$$L = (D/2) - A + 20$$

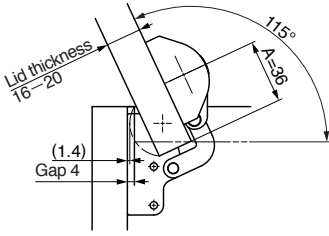
D: Lid length (mm)

A: Position of damper bracket (mm)
(Dimension A = 36- 38mm)

Lid length (D) mm	Lid weight (m)
250	5.61 ~ 7.48 kg
300	4.57 ~ 6.09 kg
350	3.85 ~ 5.13 kg
400	3.33 ~ 4.43 kg
450	2.93 ~ 3.90 kg

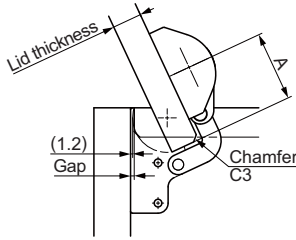


STANDARD INSTALLATION



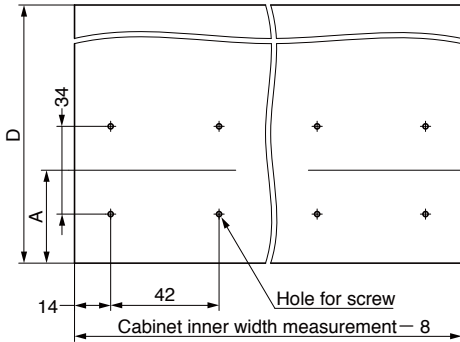
INSTALLATION WITH MINIMAL GAP

Gap can be reduced with a chamfer on lid.

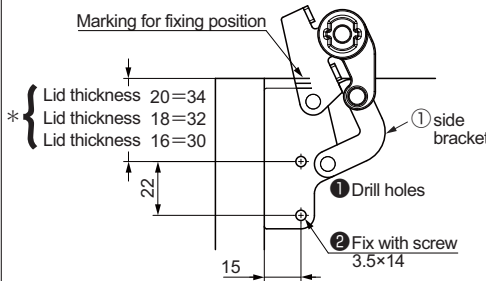


Lid thickness	Standard		With chamfer	
	A	Gap	A	Gap
16	36	4	38	2
18			37	3
20			-	-

ASSEMBLY PROCEDURE

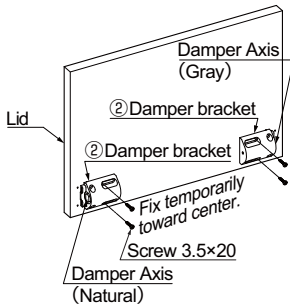


1. Assembly on cabinet



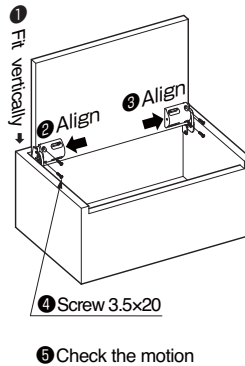
* The above shows the lid and side board in an aligned position when the lid is closed.

2. Assembly on lid

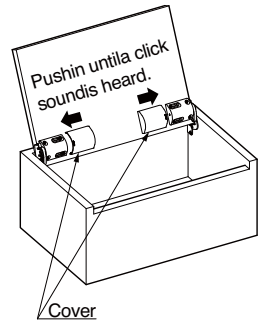


Damper Bracket [L] : Damper Axis color Natural
Damper Bracket [R] : Damper Axis color Gray

3. Assembling lid



4. Assembling covers



JGATSUNE KOGYO CO.,LTD.
kyo, JAPAN
Phone: +81 (0)3 3866 2260
mail: export@sugatsune.co.jp

JGATSUNE KOGYO (UK) LTD.
ading,UK
Phone: +44 118 9272 955
mail: sales@sugatsune.co.uk

SUGATSUNE EUROPE GmbH
Düsseldorf, GERMANY
Phone: +49 211 53812900
E-mail: info@sugatsune.eu

SUGATSUNE KOGYO INDIA PRIVATE LIMITED
Mumbai, INDIA
Phone: +91 22 28314490/91
E-mail: sales@sugatsune.in

SUGATSUNE SHANGHAI Co., LTD.
Shanghai, CHINA
Phone: +86 21 3632 1858
E-mail: lamp@sugatsune.com.cn

Guangzhou, CHINA
Phone: +86 20 6639 3552
E-mail: lamp@sugatsune.com.cn

SUGATSUNE AMERICA, INC.
California, USA
Phone: +1 310 329 6373
E-mail: sales@sugatsune.com

Chicago, USA
Phone: +1 312 461 1081
E-mail: chicagoshowroom@sugatsune.com