

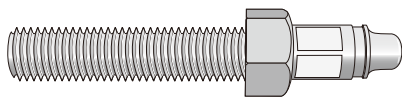
LAMP® SWAY FOOT - LEVELING GLIDE

Mounting Instructions

MSDF58-10-40
MSDF58-16-80
MSDF80-20-100

COMPONENT PARTS

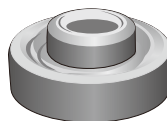
(4 pieces each per set)



Bolt



Collar

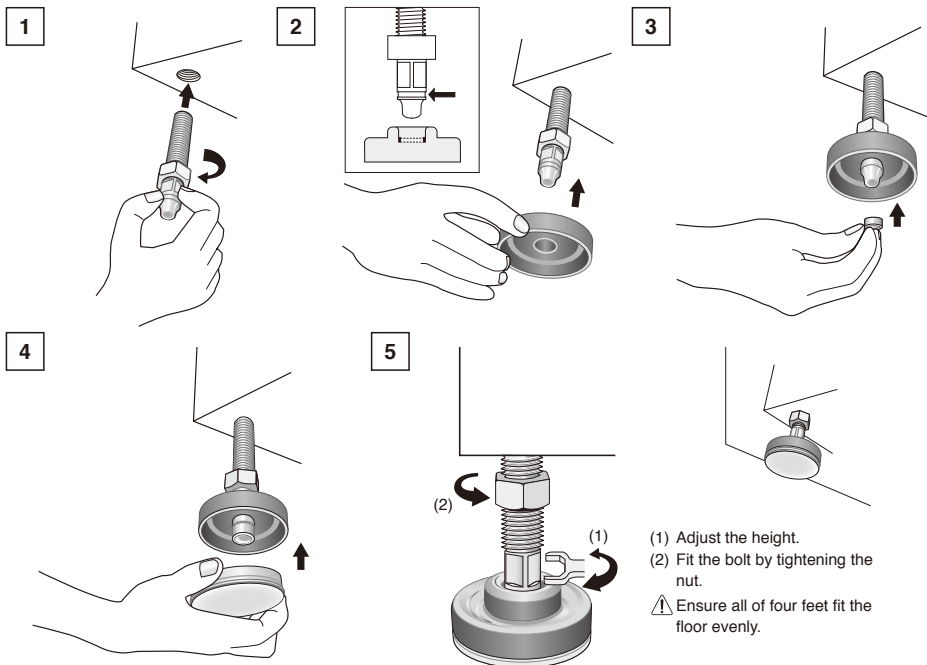


Cover



Base

HOW TO MOUNT



- (1) Adjust the height.
 - (2) Fit the bolt by tightening the nut.
- ⚠ Ensure all of four feet fit the floor evenly.



Caution If these cautions are not followed, it may result in injury or damage.

- When installing the sway foot to a cabinet or other unit, make sure it stands up vertical in relation to the washer.
- Make sure to leave at least 30 cm of space around the unit.
- Use it on a flat floor.
- In the event of a large earthquake the cabinet may move. After the earthquake, check and correct the layout if needed.
- The quality range only extends to the product as a part. We do not guarantee the functionality, performance and safety of the final product.

SUGATSUNE KOGYO CO.,LTD.
Phone: +81 3 3866 2260
F a x : +81 3 3866 4447
E-mail: export@sugatsune.co.jp
Website: www.sugatsune-intl.com

SUGATSUNE KOGYO (UK) LTD.
Phone: +44 118 9272 955
F a x : +44 118 9272 871
E-mail: sales@sugatsune.co.uk
Website: www.sugatsune.co.uk

SUGATSUNE AMERICA, INC.
Phone: +1 310 329 6373
F a x : +1 310 329 0819
E-mail: sales@sugatsune.com
Website: www.sugatsune.com

SUGATSUNE SHANGHAI CO., LTD.
Phone: +86 21 3632 1858
F a x : +86 21 3632 1868
E-mail: lamp@sugatsune.com.cn
Website: www.sugatsune.com.cn